

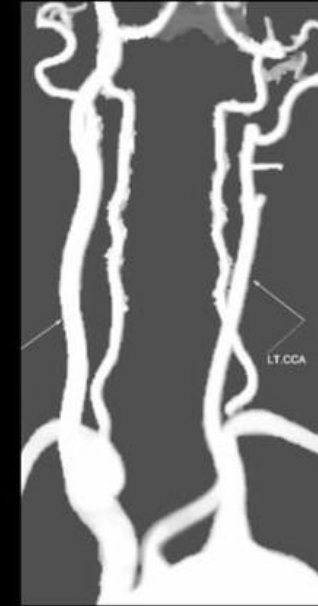
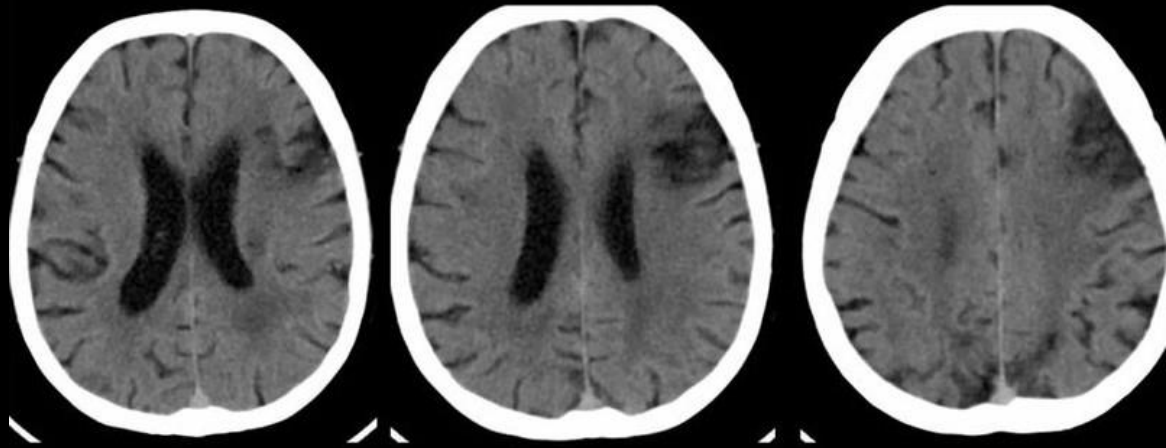
'Beyond Window' MT- II

- DAWN & DEFUSE-3 did demonstrate benefit of MT beyond 6 hours(upto 24hrs).
- Illustrative example is presented.

CASE

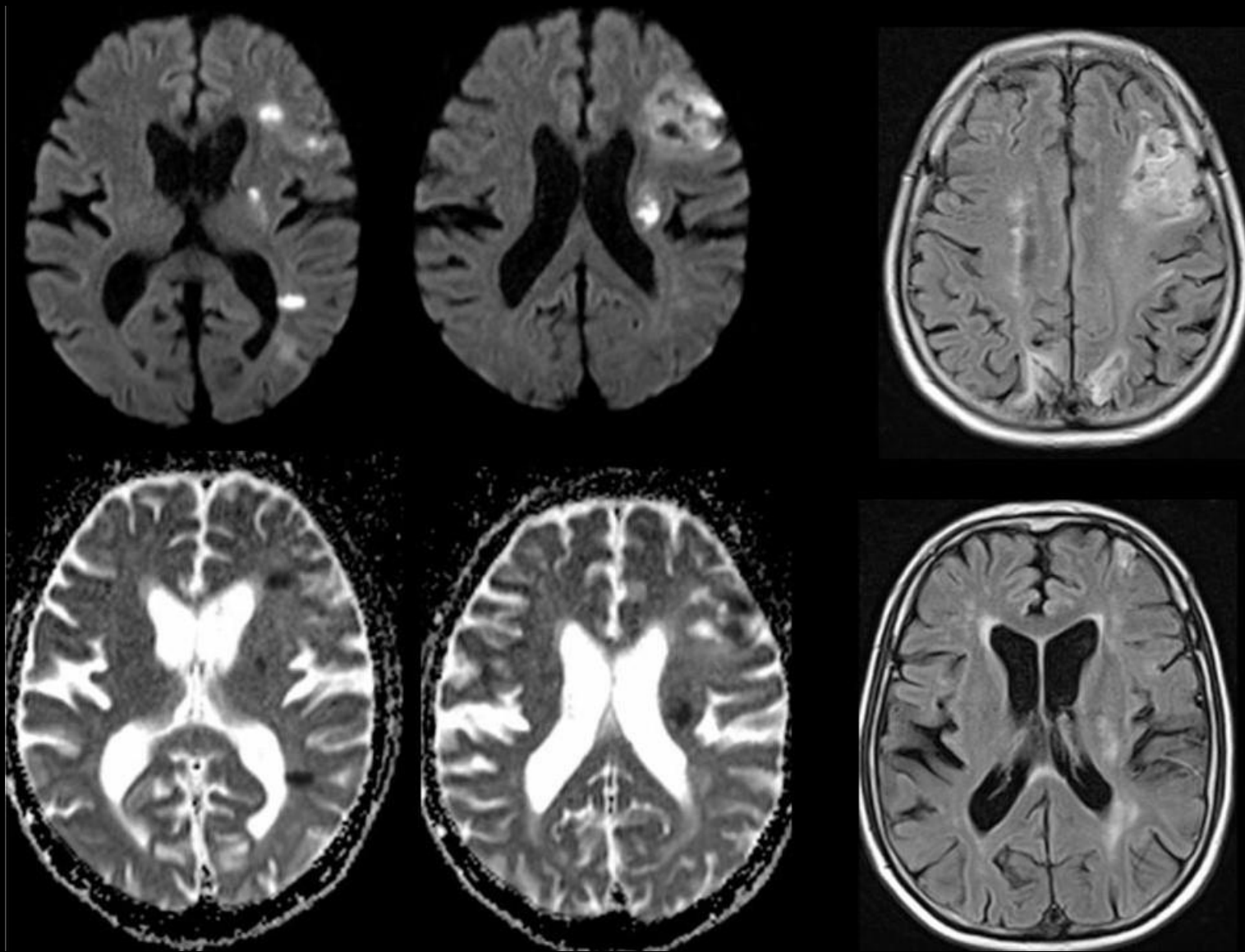
M/65, h/o CABG 3 years ago

48 hrs earlier c/o slurred speech and right sided weakness , near complete recovery.



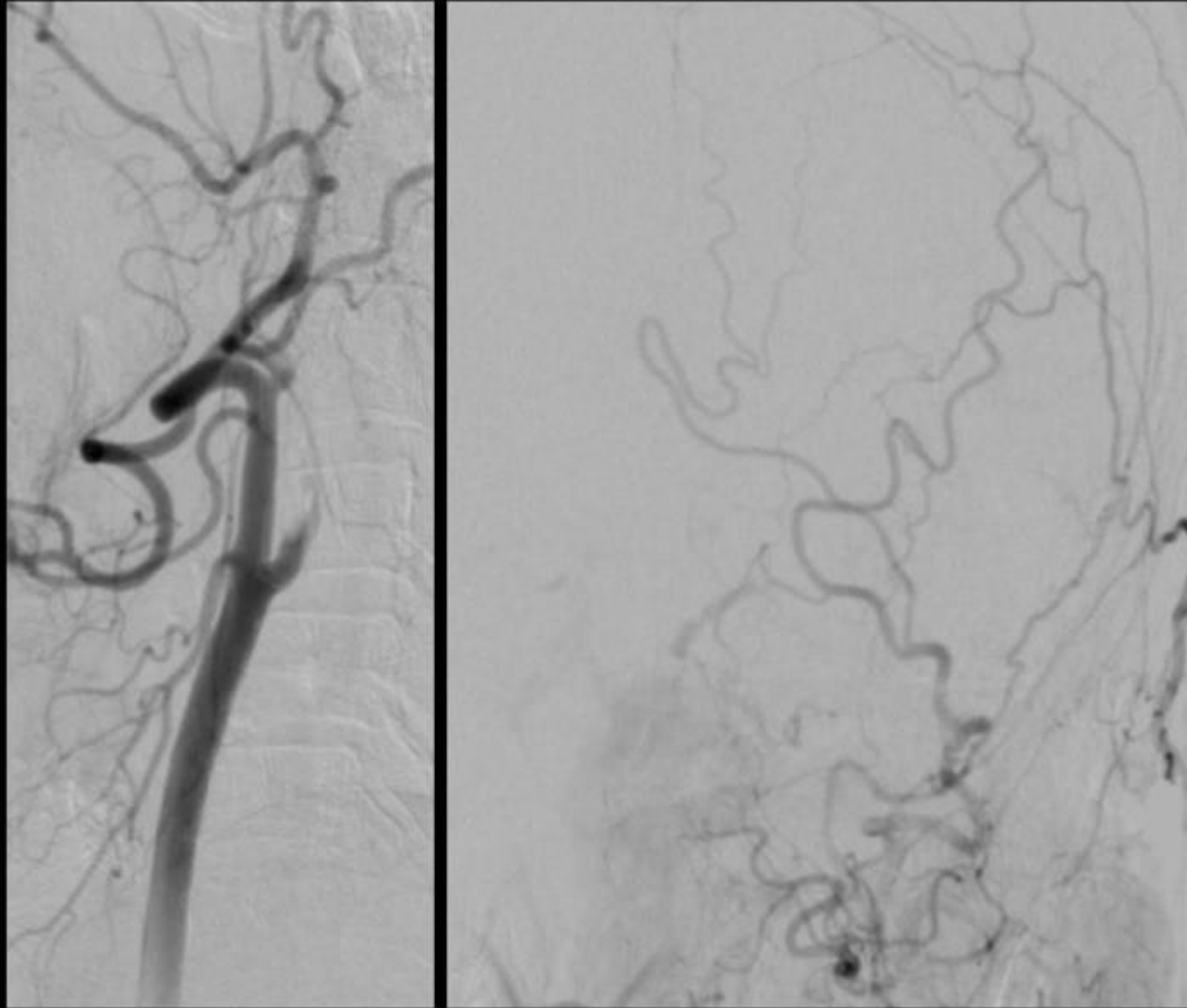
Conserved

Presented next day with hemiplegia and aphasia



New Ischemia

Lt. CCA



Lt ICA occluded

Rt. CCA



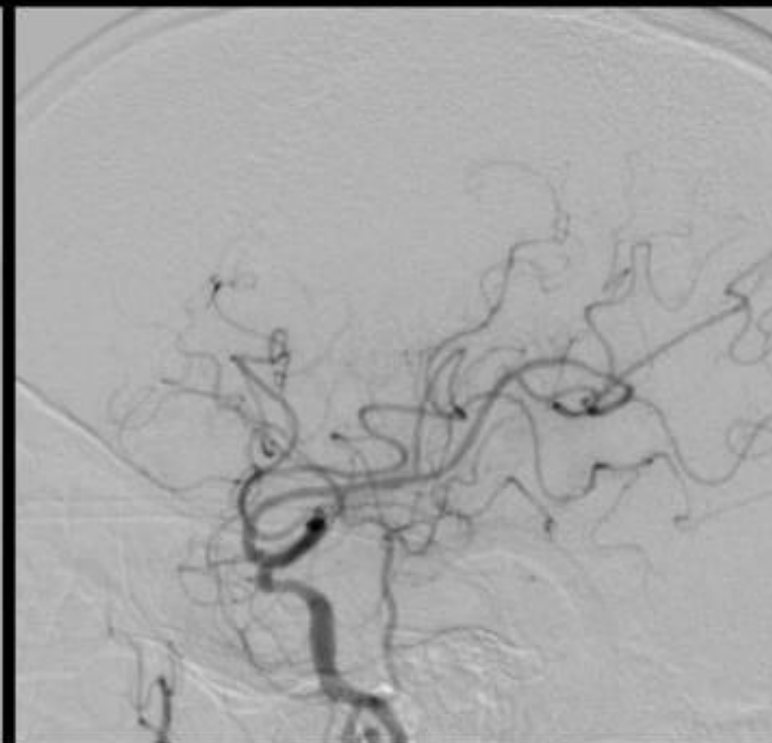
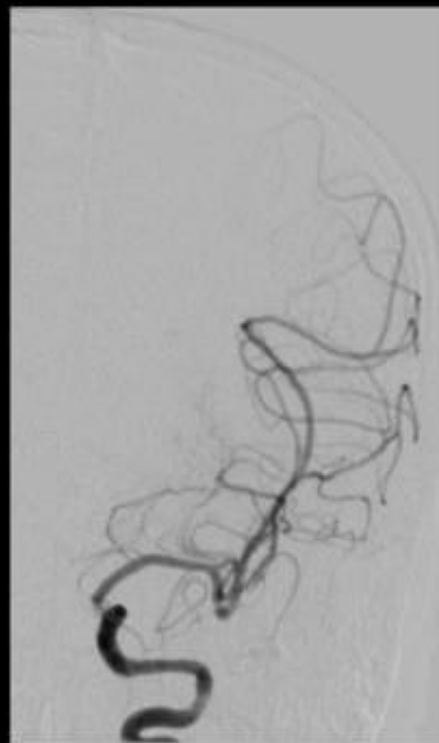
Suboptimal collateral score



Thromboaspiration



Lt. ICA Post Aspiration



Lt. ICA Final Post



Navigation of aspiration catheter was difficult. Post
recanalization revealed ICA tortuosity

- In ICU: Strict BP control in range of 120-130/80mm of Hg
- Over 4 days:
Speech : minimal slurring
Walking without support

90 days mRS: 0

3 days post symptom onset, decision for
MT was based on repeat imaging & clinical
worsening

- Flexible, individualised approach is advocated when deciding about 'Out of window period' MT.
- Faster and more precise assessment can be done by AI, where available.

Case courtesy : Nishant Aditya, Mumbai