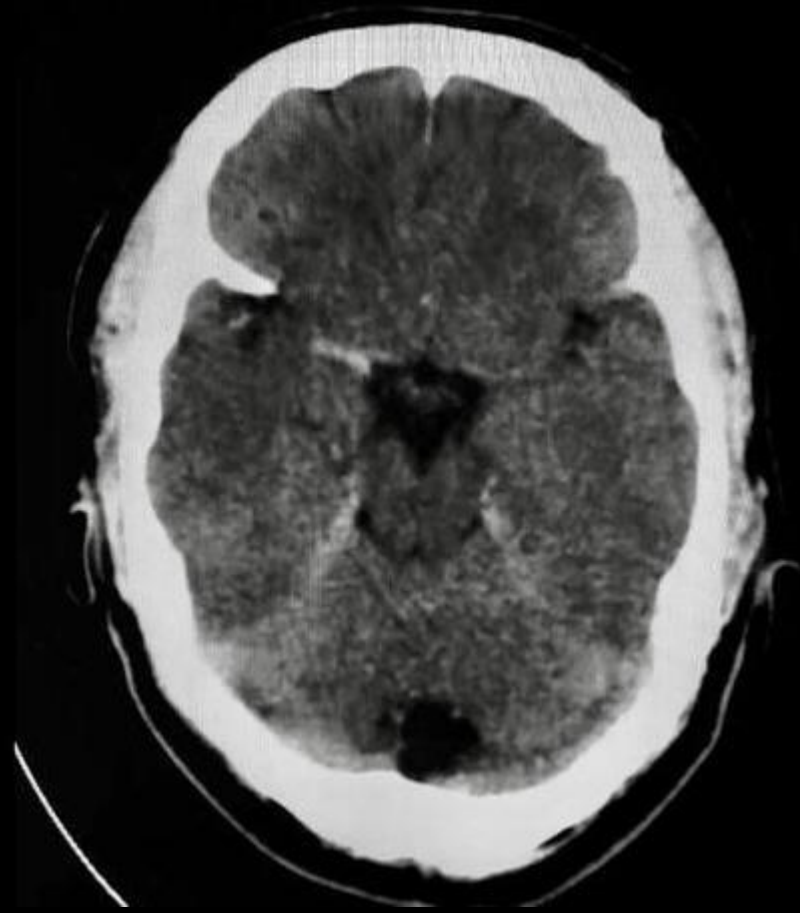


Tandem Carotid Lesion in Acute Stroke

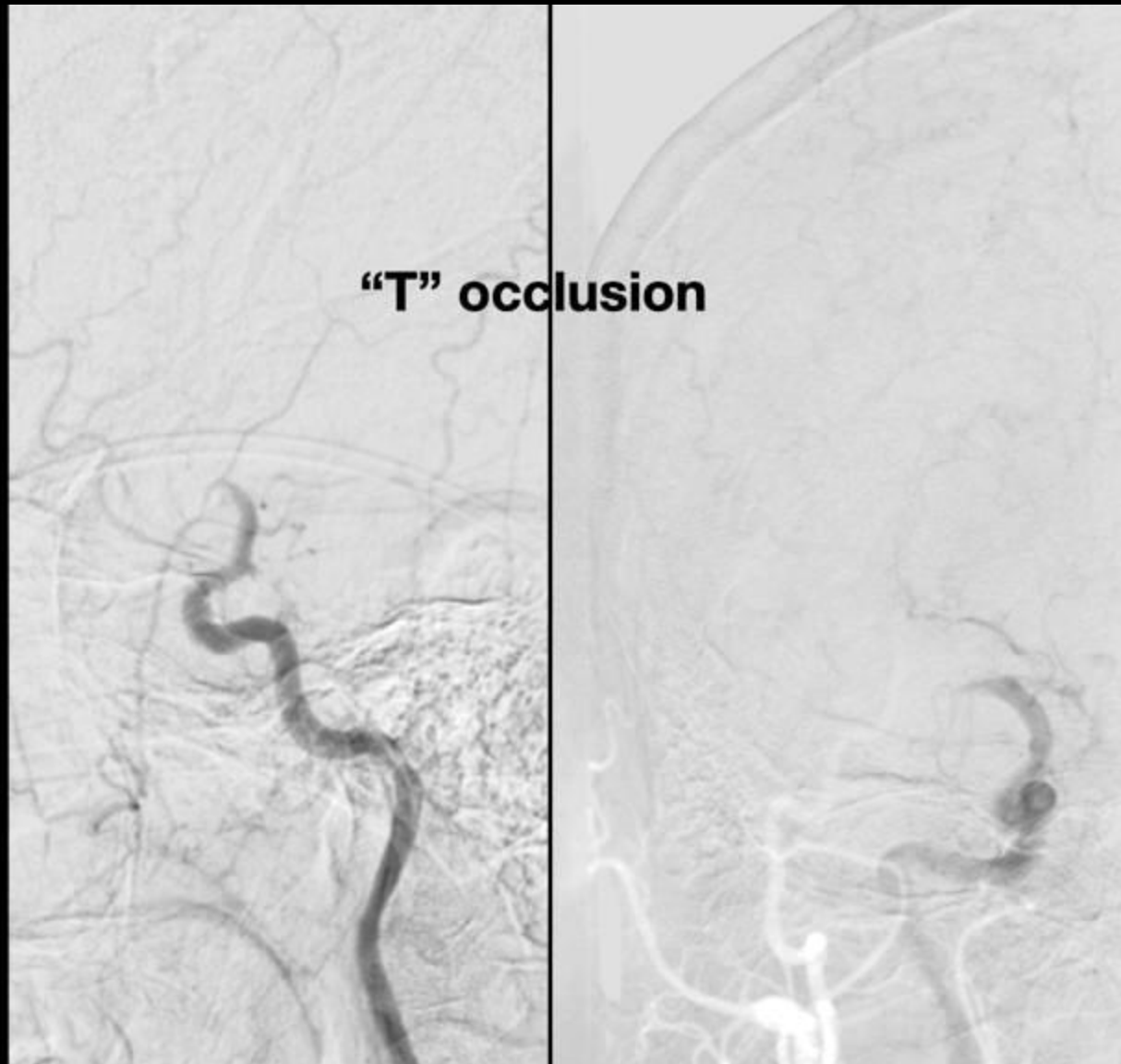
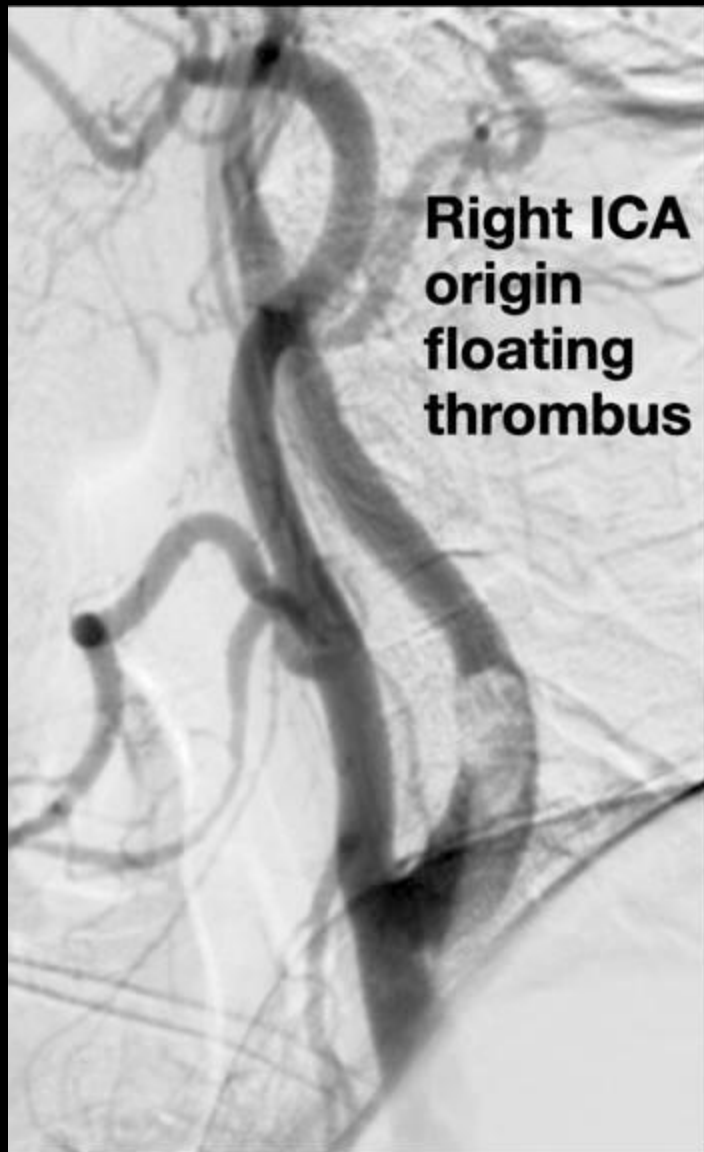
- Tandem lesions in AIS are not uncommon.
- These patients often have worse outcomes compared with isolated intracranial occlusion

Case

M/35 dense hemiplegic with gaze preference and facial paresis presented at 4 hrs
NIHSS 14

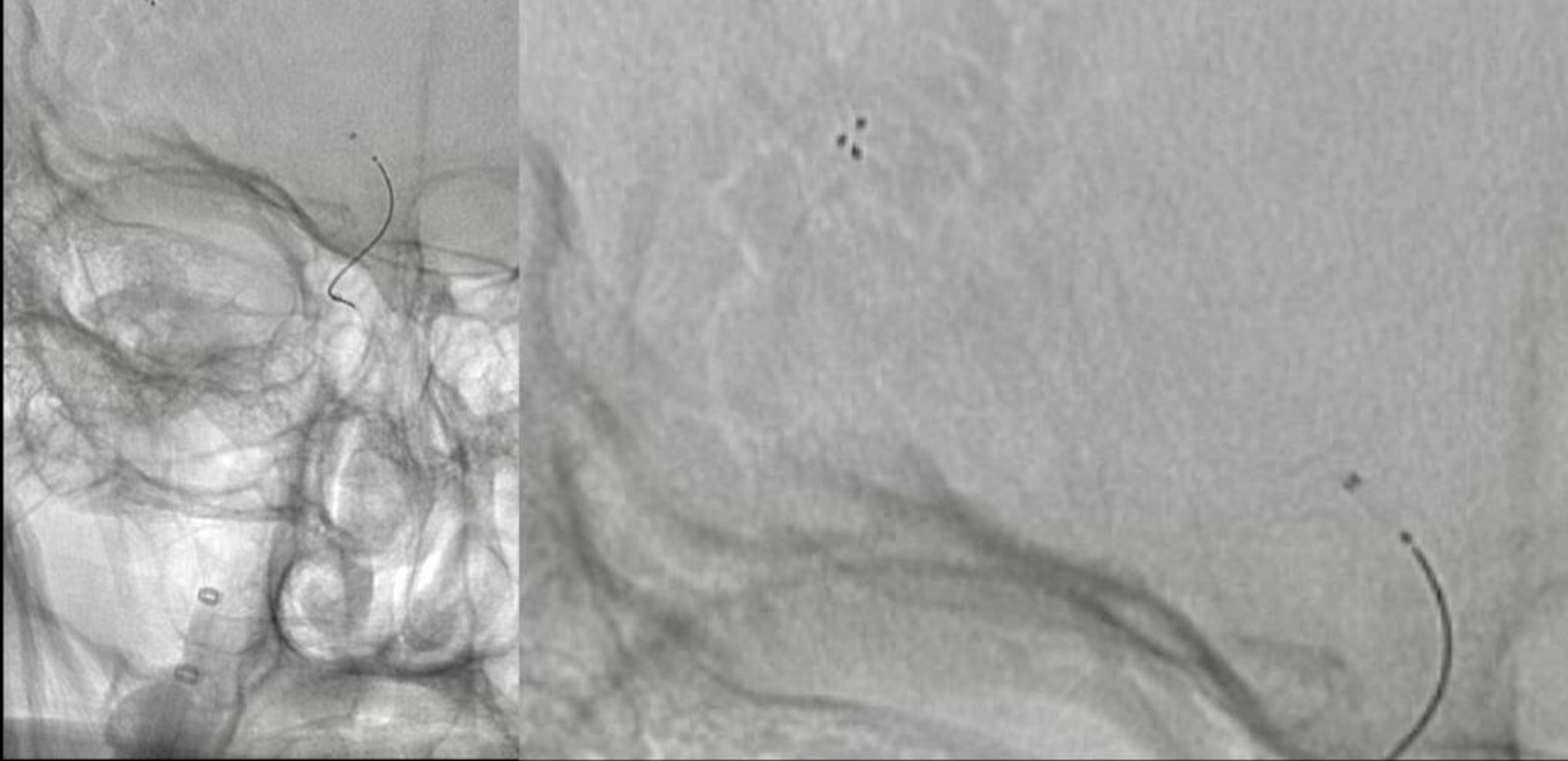


Rt temporo parietal hypodensity

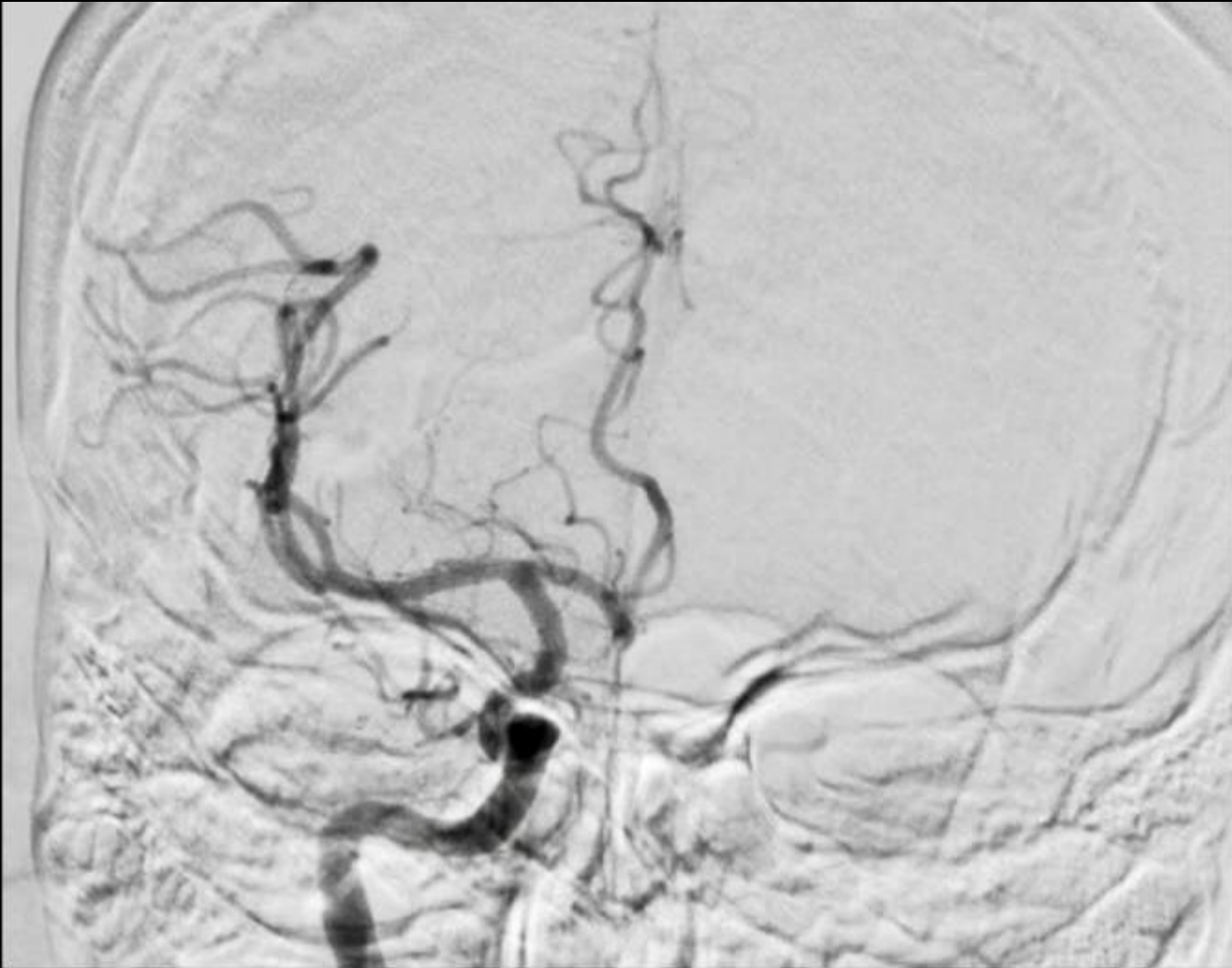




Guide access for MT. Contact aspiration not successful.



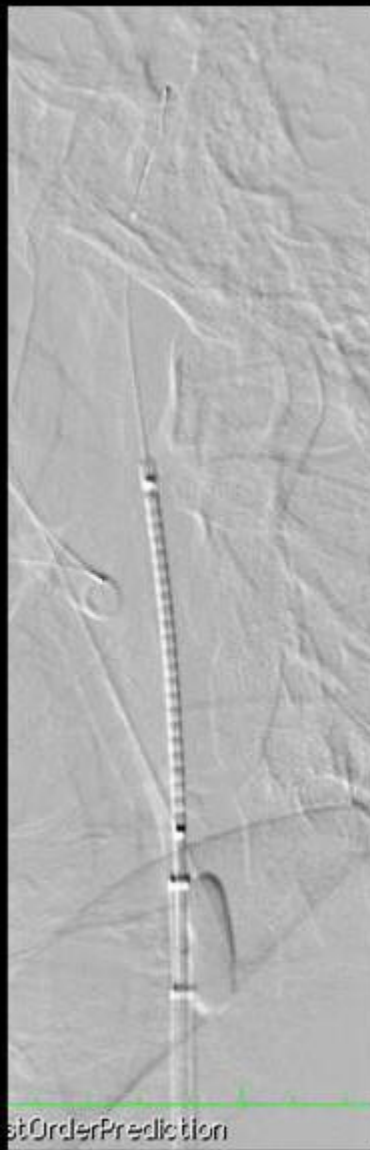
Stentriever in position



TICI 3, First pass



Floating luminal thrombus was unchanged

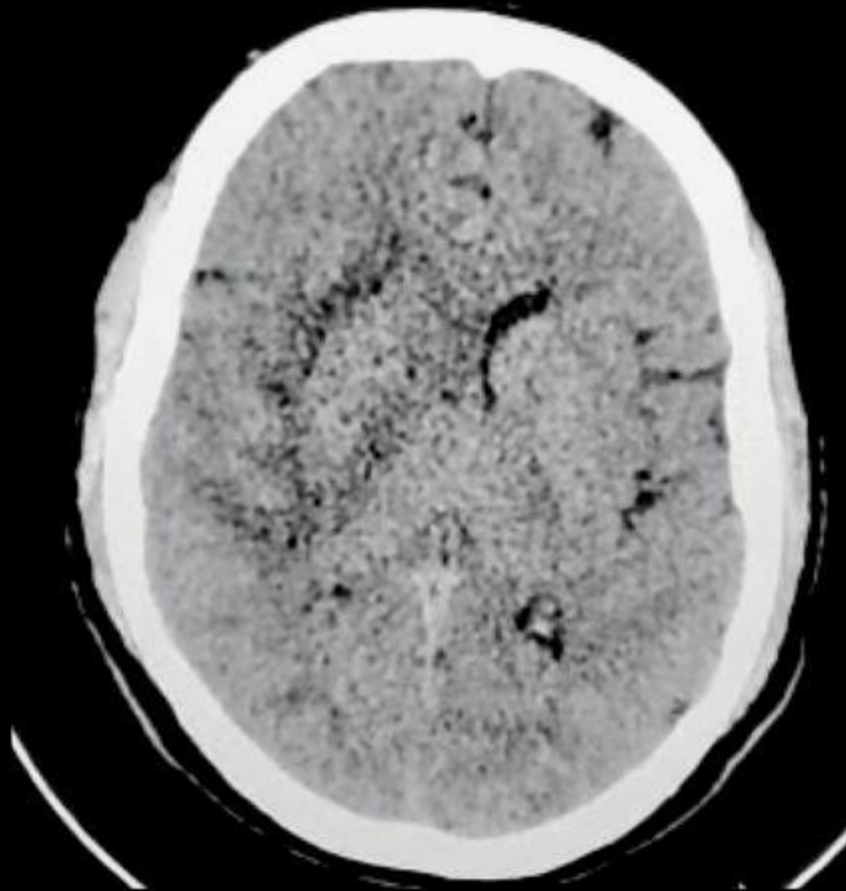


PRECISE 8 X 40 MM

Dual Antiplatelet Loading dose. Hybrid design stent with proximal protection



Final angiograms, no filling defect on stent



Follow up CT. Decompression could be avoided

Follow Up At 2 Months

MRS 3

- Thrombectomy vs MT+ Acute stent placement always a therapeutic dilemma.
- Floating luminal thrombus made it more challenging.
- Intracranial occlusion was treated first followed by acute stent placement.

Case Courtesy – Hiren Patel, Ahmedabad